

FULL SCALE SIMULATION OF A RIB-ROLLER END CONTACT

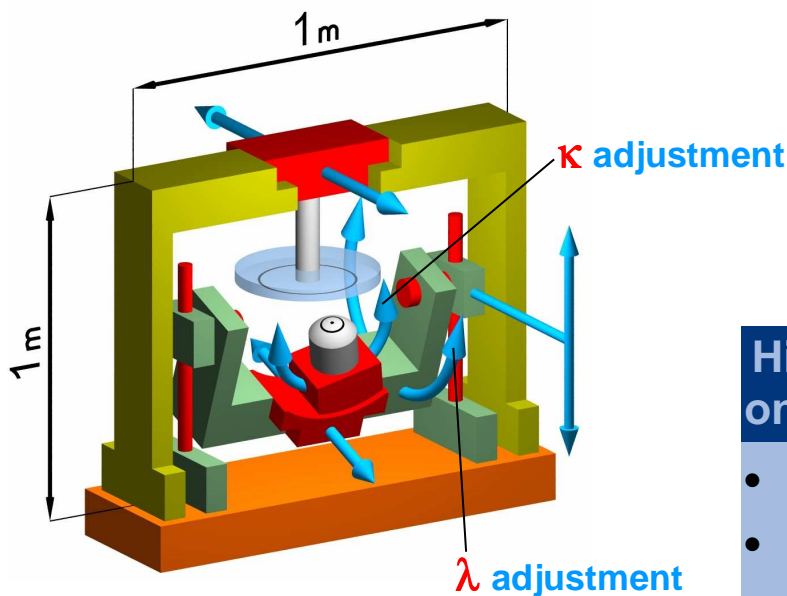
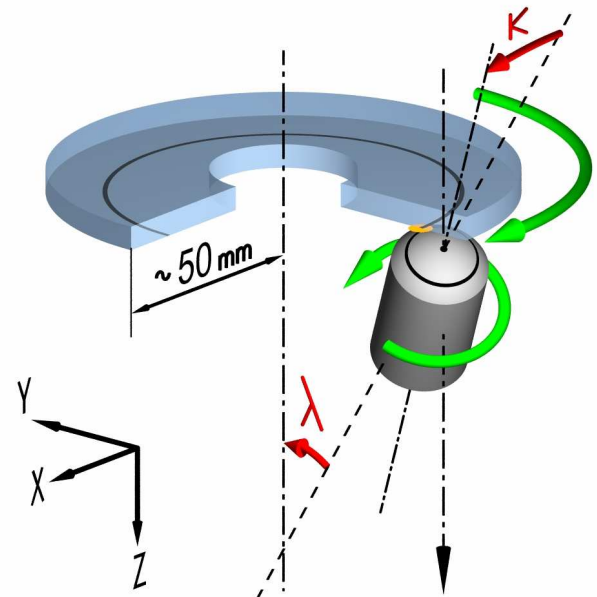
Also suitable for:

- Wheel-rail flange contact
- Continuously variable toroidal (CVT) drive



Context

- High spinning
- High driving speed
- High normal load
- Large size EHL contacts



High confidence measurements on each body

- x y z Forces
- z Torque
- Rotational speed

Operating conditions

- Maximum rotational speed
 - Upper body: 9000 rpm
 - Lower body: 21000 rpm
- Adjustable sliding/spinning/skew
- Maximum normal load: 3000 N
- λ angle (spinning): from 0 to 10°
- κ angle (skew): from -3 to 3°
- Temperature measurement
- Materials: steel/steel or steel/silica